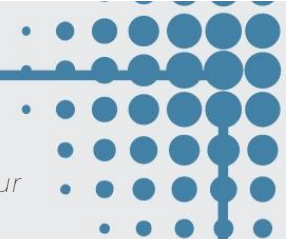


Weekday School Class Schedule 2025-26



Registration Fee: This non-refundable fee, due with the registration, is equal to one month's tuition and will reserve a spot in your child's class. This fee is used over the summer to prepare for the school year with equipment updates and restocking of supplies.

Tuition: Tuition will be collected for 10 months, August – May. The amount is based on a daily rate for the total number of days your child will be attending, divided into 10 equal payments.

Enrichment Fee: \$80 per child. This fee helps us to offer supplemental activities.

Book and Supplies Fee: \$175 Kindergarten only.

Children attending the 3s, 4s, and Kindergarten must be potty trained and independent in the bathroom.

Class Name	Birthdate Range (Oldest – Youngest)	Registration Fee And Monthly Tuition	Class Days	Maximum Number of Children per Class
Babies M/W	9/1/24 – 7/01/25	\$200	Monday and Wednesday	5
Babies T/Th	9/1/24 – 7/01/25	\$200	Tuesday and Thursday	5
1s – M/W/F	10/1/23 – 8/31/24	\$245	Monday, Wednesday, Friday	8
1s – T/Th	10/1/22 – 8/31/24	\$200	Tuesday and Thursday	8
2s – M/W/F	3/1/23 – 9/30/23	\$245	Monday, Wednesday, Friday	10
2s – T/Th	3/1/23 – 9/30/23	\$200	Tuesday and Thursday	10
2.5s – M/W/F	9/1/22 – 2/28/23	\$245	Monday, Wednesday, Friday	12
2.5s – T/Th	9/1/22 – 2/28/23	\$200	Tuesday and Thursday	12
3s – 3 Day	9/1/21 – 8/31/22	\$245	Tuesday, Thursday, Friday	12
3s – 3 Day	9/1/21 – 8/31/22	\$245	Monday, Wednesday, Friday	12
3s – 4 Day	9/1/21 – 8/31/22	\$265	Tuesday - Friday	2 Classes of 12
4s – 4 Day	9/1/20 – 8/31/21	\$265	Monday - Thursday	2 Classes of 14
4s – 5 Day	9/1/20 – 8/31/21	\$290	Monday - Friday	14
Kindergarten	9/1/19 – 8/31/20	\$320	Monday - Friday	14